



PRODUCT



MANUFACTURER

BEECH OVENS

MODEL NUMBER

RND1300

PRODUCT DESCRIPTION

Round Stone Hearth Oven – Wood/Gas fired.

Ext Diameter:

Int Diameter:

Height:

Ø1650mm.

1300mm.

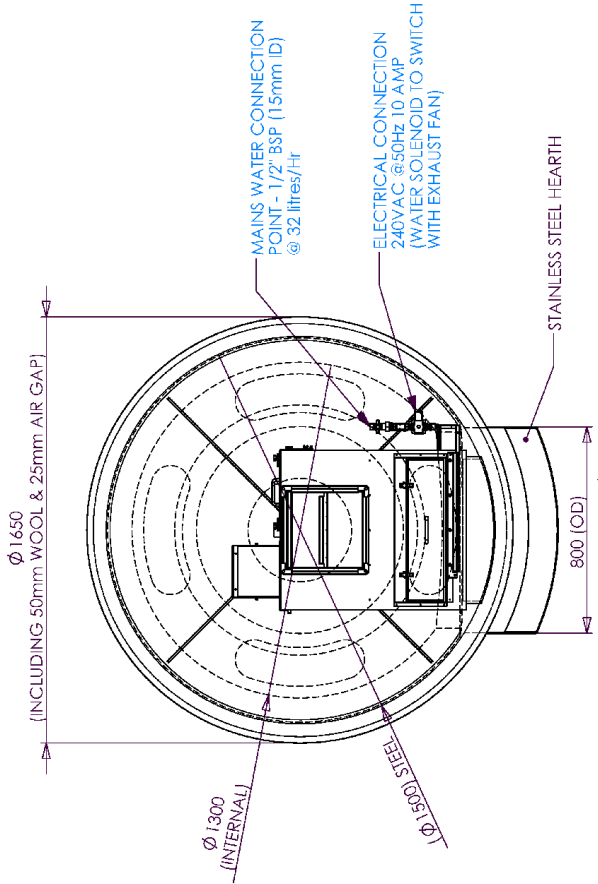
1730mm.

MANUFACTURED IN AUSTRALIA

www.beechovens.com

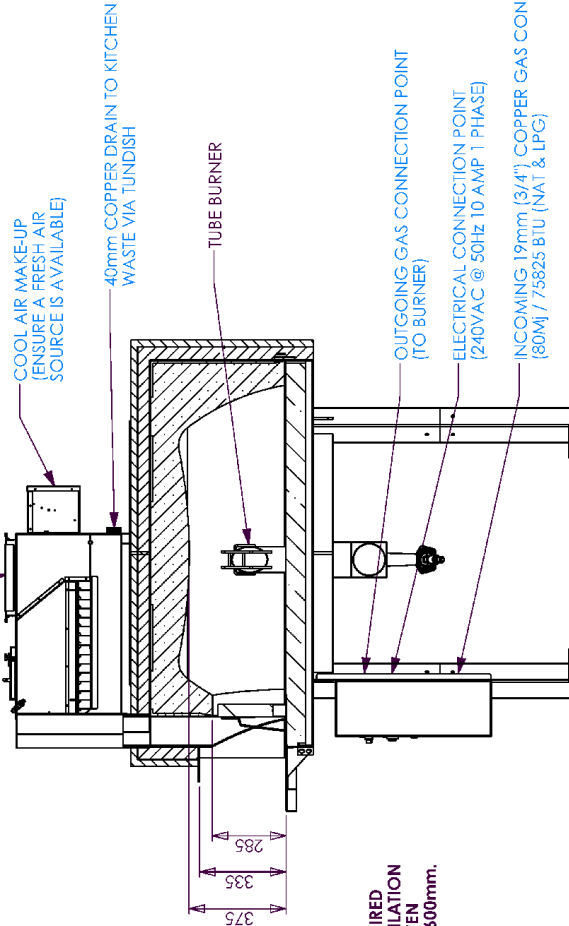
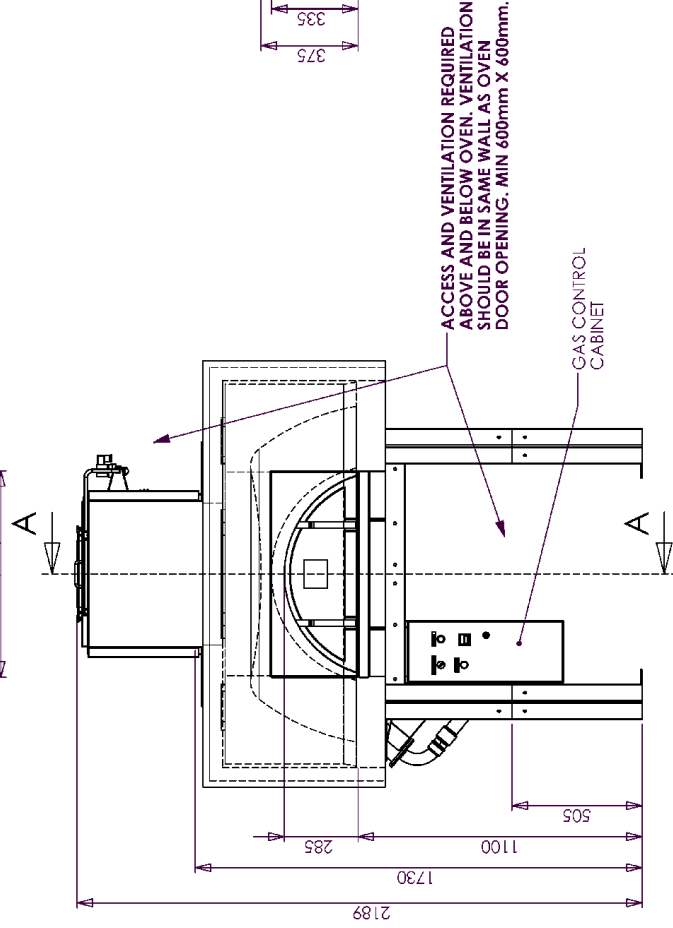
SPECIFICATIONS

| | |
|-----------------------------|---|
| Purpose | Wood/Gas Fired stone hearth oven for cooking Pizza and other dishes. |
| Construction | High grade castable ceramic encased in 5mm steel housing supplied in 2 major sections with removable legs. 50mm insulation covers oven body, 25mm air gap between insulation and non-combustible façade material. 75mm stone hearth floor above 25mm insulating board and 5mm plate. |
| Firing Type | Wood, Gas or Gas Back-up (<i>Wood and Gas</i>) |
| Gas | Gas Back-up - 80Mj NAT / 80Mj LPG (<i>Tube Burner</i>) Full Gas – 70Mj + 80Mj Nat / 70Mj + 80Mj LPG (<i>Display + Tube Burner</i>) |
| Exhaust Requirements | Under Canopy/Hood OR Beech Spray Filter (<i>Wet Scrubber</i>) OR Flue Transition. |
| MEP Ratings | Gas Connection – 19mm (3/4”) line (1 per burner). Electrical – 220-240VAC @ 50Hz 1 Phase 10 AMP Spray Filter Water Inlet– 15mm @ 30 L/Hr. Spray Filter Water Outlet – 40mm Copper Drain – To drain via tundish visible to operator. Spray Filter Water Solenoid – 220-240VAC @ 50Hz 1 Phase 10AMP (<i>Linked to exhaust fan – Fan ON = Solenoid ON</i>) Spray Filter Exhaust Ratings – 300mm x 300mm connection, 130Pa Static Pressure, 700l/sec Spray Filter Cool air Make-up unit – Ensure a fresh air supply is available. No connection required. |
| Capacity | Cooks approximately 70 x 300mm pizzas per hour. |
| Accessories | Pizza Tools (<i>Pizza Peel, Spigot Brush, Brass Floor Brush, Bubble Hook, SS Rake and Shovel</i>) Stainless Steel Hearth (<i>Optional – shown in image</i>) Spray Filter (<i>Optional – shown in image</i>) |
| Safety | Oven and associated systems are CE and UL compliant. UL Tested to Subject 2162 (<i>Wood/Gas Fired</i>). Complies to USA “ANSI-NSF standard 4” Exterior temperatures below 50°C. Compliant Gas systems with flame failure device. |
| Special Requirements | Façade and Oven surround to be made of non-combustible material. Tube Burner Vent to be connected via ventilation panel in front façade panel below oven door (<i>See Installation and Operation Manual for details</i>) Access and ventilation panel to both above and below oven - minimum 600mm x 600mm Metal infill required between oven spigot and façade to prevent hot air and flames entering the façade cavity. |

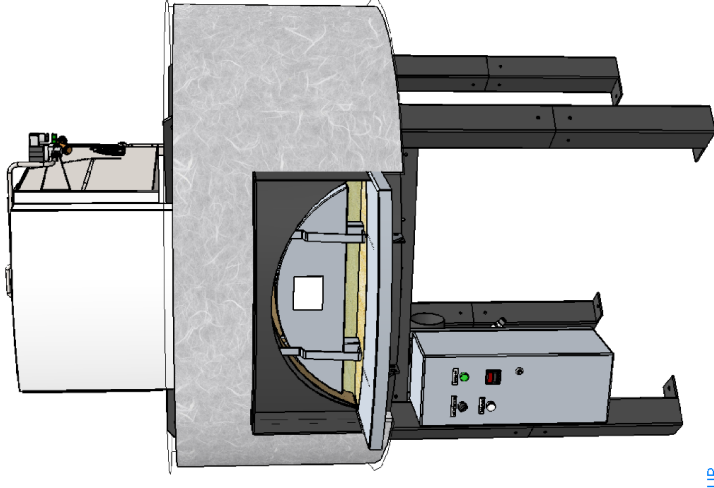


NOTES:
 CONNECTION TO APPROVED FLUE/DUCTING REQUIRED
 (CHECK LOCAL CODES AND REGULATIONS)
 SERVICES REQUIRED - SEE BLUE TEXT
 THE OVEN IS DELIVERED IN THREE (3) SECTIONS:
 UPPER SECTION - Approx 1050kg
 BASE SECTION - Approx 495kg
 LEGS - Approx 10kg EACH
 TOTAL WEIGHT = Approx 1650KG
 FOR INSTALLATION INSTRUCTIONS SEE INSTALLATION
 AND OPERATION MANUAL

EXHAUST REQUIREMENTS
 300mm X 300mm FLUE CONNECTION
 @ 700 litres/sec (2520m³/hr)
 @ 130Pa STATIC PRESSURE



SECTION A-A



| REV. | DESCRIPTION OF CHANGES | DATE | CHANGED BY |
|------|-------------------------|------|------------|
| 0 | ISSUED FOR CONSTRUCTION | | |
| | DESCRIPTION OF CHANGES | | |



| | | | | | | | |
|---|---------|---------|--|-------|------|------|--------------------|
| Drawn | S Trood | Checked | | Scale | 1:20 | Date | 6/05/2011 |
| ROUND OVEN ϕ 1300mm INTERNAL GBL (GAS BACK-UP LEFT) SPRAY FILTER - SS HEARTH | | | | | | | |
| | | | | | | | A3 |
| | | | | | | | NTS - SITE MEASURE |